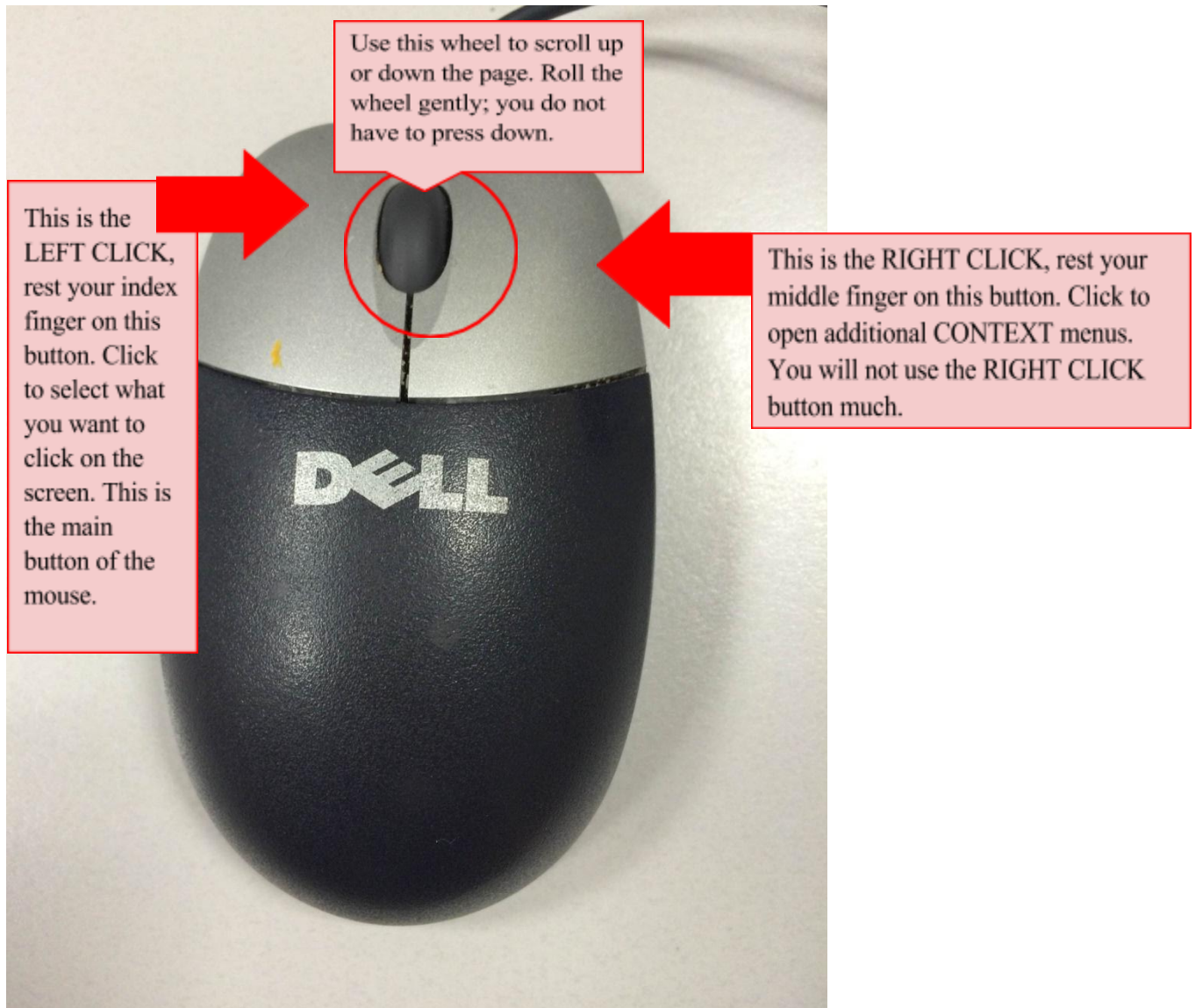


How to: Use A Mouse

Using a mouse is essential to being able to use a computer. The library computers use Dell – there are three parts to this mouse. The Left Click, the Right Click, and the Scroll wheel in the middle.



HOW TO FIX A TYPO: FIXING THE WORD LIEK

- 1) **LEFT** click the mouse cursor between **EK**
- 2) press **backspace** on the keyboard (to delete the E) **LIK**
- 3) Now, move the mouse to the right side of **K**,
- 4) **LEFT** click to insert a cursor.
- 5) Type **E**, you now have **LIKE**